



**THANK YOU VOTERS!**

# Transportation Bond

## 2017 Street Repair and Repaving Project

*Project Information*

### Linfield South

*Spot pavement repair, asphalt overlay and accessibility improvement on streets in the Gilson's Subdivision, Melrose Addition and Orr's Addition area in SE McMinnville*

#### **Project Location**

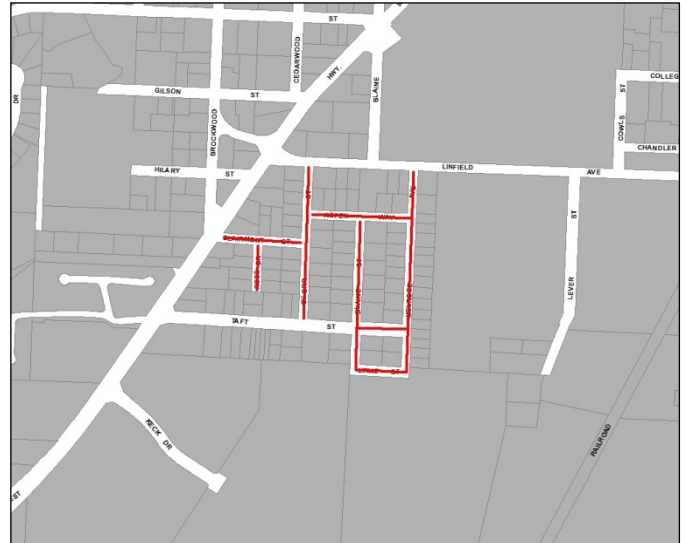
- SW Melose, SW Aspen, SW Taft, SW Blaine, SW Blaine, SW Clairmont, SW Rose, SW Linke

#### **Project Overview**

This project consists of spot repairs on distressed asphalt areas, street grinding, a warm mix asphalt overlay and updated ADA curb ramps where necessary.

#### **What To Expect**

Expect intermittent traffic delays during repair work. Watch for construction signs, flagging personnel, no parking signs and informational flyers prior to, and as the work progresses.



#### **CONSTRUCTION SCHEDULE**

**July 5-6: Street grinding**

**July 10-12: Paving**

**EXPECT TRAFFIC DELAYS DURING GRINDING AND PAVING**

**LOCAL ACCESS WILL BE MAINTAINED AT ALL TIMES**



#### **Construction Contractor**

Roy Houck Construction of Salem will be performing the overlays and ADA work, with all work being reviewed and approved by City inspectors.

#### **For More Information**

David Renshaw, Public Works Superintendent  
503.434.7316 • [david.renshaw@mcminnvilleoregon.gov](mailto:david.renshaw@mcminnvilleoregon.gov)